



1625

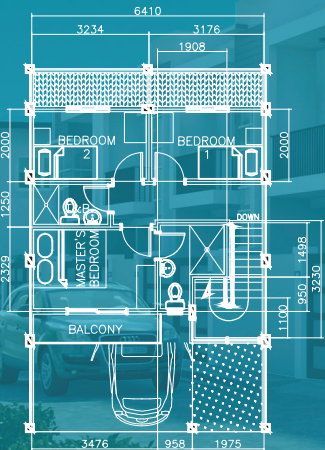
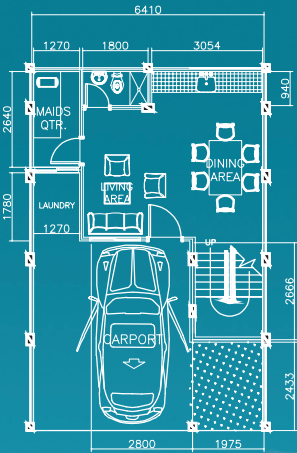
MADISONPLACE



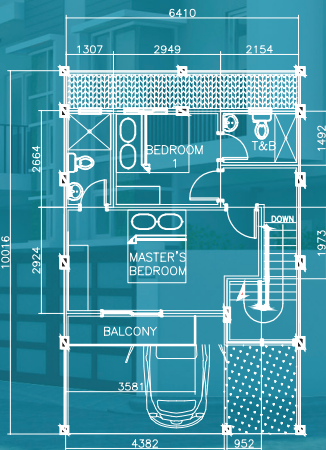
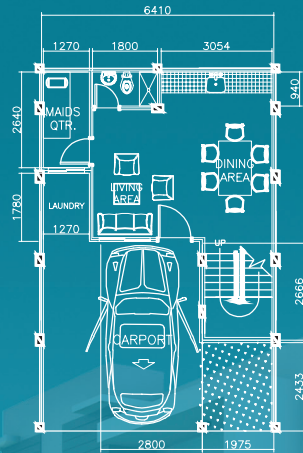
Live in Comfort and Style Within the City

PALOMINO STREET, HORSESHOE HILLS, BANAWA, CEBU CITY

### 3-BEDROOM FLOORPLAN



### 4-BEDROOM FLOORPLAN



### HOUSE SPECIFICATION

#### Regular Units

Lot Area: 61 sq.m. - 68 sq.m.  
Floor Area: 85 sq.m.

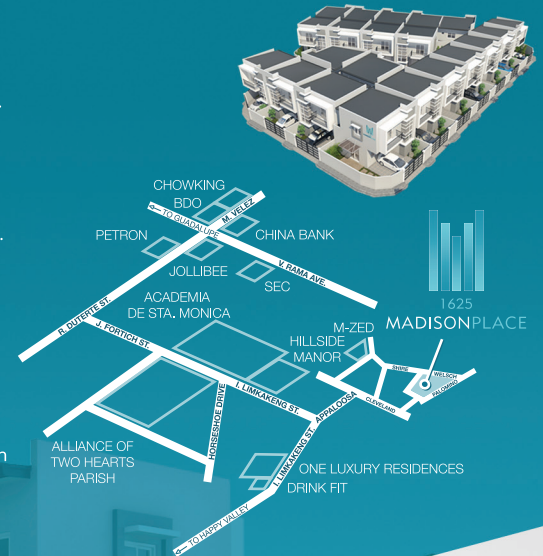
#### Corner Units

Lot Area: 73 sq.m. - 92 sq.m.  
Floor Area: 85 sq.m.

### FEATURES & AMENITIES

- 3 or 4 bedrooms
- 3 toilet and baths
- Living room, dining and kitchen
- Modular kitchen cabinets
- Granite kitchen countertop
- Service area
- Garage
- Balcony
- Pocket garden
- Individual gates that provide privacy
- Lanai with side garden (corner units only)
- Provisions for telephone, cable TV and water heater
- Smoke detectors & fire extinguisher
- Bugati PPR pipes for all plumbing and water lines
- Rainwater tank reservoir for sustainable domestic uses

### VICINITY MAP



OFFICE ADDRESS:  
1721 I. Limkakang Street, Happy Valley  
Cebu City 6000 Philippines

TEL. NO.: +6332 516.0764  
MOBILE: +63920.911.9105  
+63922.394.0777  
EMAIL: questland@live.com  
www.questland.carbonmade.com

